

## Flat-Flex<sup>®</sup> Metric Drive Sprockets & Blanks

Wire Belt Company offer a comprehensive range of standard sprockets and can also manufacture to order sprockets for new or replacement applications to suit any specified Flat-Flex<sup>®</sup> belt.

To suit Belt Specification		Part Number		Sprocket Details			
Pitch mm	Wire Dia. mm	Sprocket	Blank	Outside Dia. (A) mm	Root Dia. (B) mm	Bore Dia. (C) mm	No. of Teeth
4.24	0.90	05-1122	06-1123	50.80	46.99	20	34
4.30	1.00	07-1112	08-1113				
4.30	1.27						

5.64	0.90 1.00	05-2122	06-2123	50.80	45.72	20	25
		07-2112	08-2113				
		05-2522	06-2523	76.20	70.00	20	39
07-2512	08-2513						
		05-2422	06-2423			25	
		07-2412	08-2413				

6.35	0.90 1.00 1.27	05-3122	06-3123	50.80	44.19	20	22
		07-3112	08-3113				
		05-3222	06-2223	76.20	71.12	20	35
07-3212	08-2213						
		05-3322	06-2323			25	
		07-3312	08-2313				

6.4	1.40	05-9818	06-9184	50.80	45.19	25	22
		07-9818	08-9819				
		05-8760	06-8761	74.85	69.77	25	34
		07-8760	08-8761				

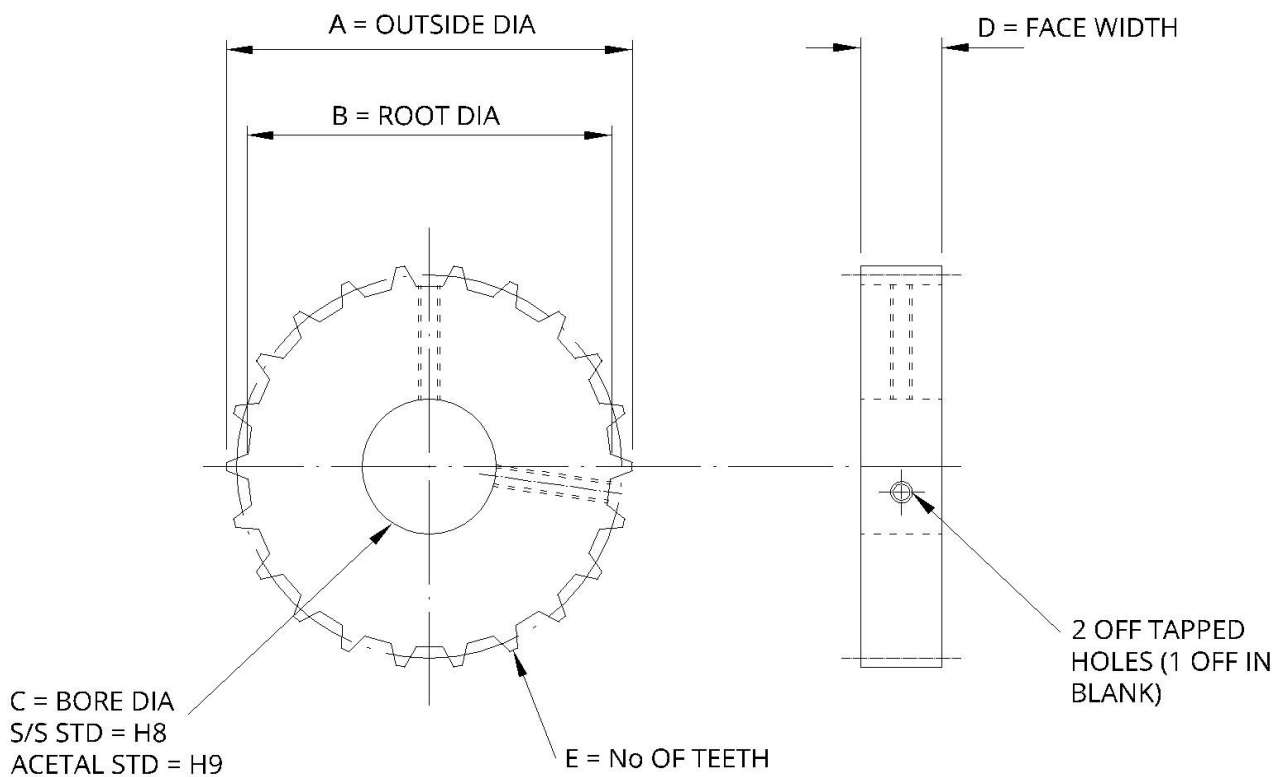
7.26	1.27 1.60	05-4122	06-4123	31.75	27.43	16	12
		07-4112	08-4113				
		05-4222	06-2123	50.80	45.72	20	20
07-4212	08-2113						
		05-4322	06-4323			25	
		07-4312	08-4313				

To suit Belt Specification		Part Number		Sprocket Details			
Pitch mm	Wire Dia. mm	Sprocket	Blank	Outside Dia. (A) mm	Root Dia. (B) mm	Bore Dia. (C) mm	No. of Teeth
7.26	1.27 1.60	05-4422	06-4423	57.15	50.80	20	22
		07-4412	08-4413				
		05-4522	06-4523	76.20	68.58	20	29
07-4512	08-4513						
		05-4622	06-4623			25	
		07-4612	08-4613				
9.00	1.83	05-9242	06-9367	76.20	69.28	25	24
		07-9242	08-9367				
9.6	2.08	05-9063	06-9078	74.88	67.26	25	22
		07-9063	08-9078				
11.30	1.27	05-5122	06-5123	76.20	70.86	25	19
		07-5112	08-5113				
12.70	1.83 2.35	05-6122	06-6123	50.80	44.95	20	11
		07-6112	08-6113				
		05-6222	06-6223	76.20	68.58	25	17
		07-6212	08-6213				
		05-6322	06-6323			20	
		07-6312	08-6313			25	
		05-6422	06-6423				
		07-6412	08-6413				
20.32	2.35	05-7122	06-7123	76.20	65.53	20	10
		07-7112	08-7113				
		05-7222	06-7223			25	
		07-7212	08-7213				

Pre-fixed codes '05' & '06' are Stainless Steel, pre-fixed codes '07' & '08' are Polyoxymethylene (POM)  
Standard Face Width ('D') is 14.3mm; other widths are available on request.

Keyways are optional.

## Standard Sprocket Dimensions



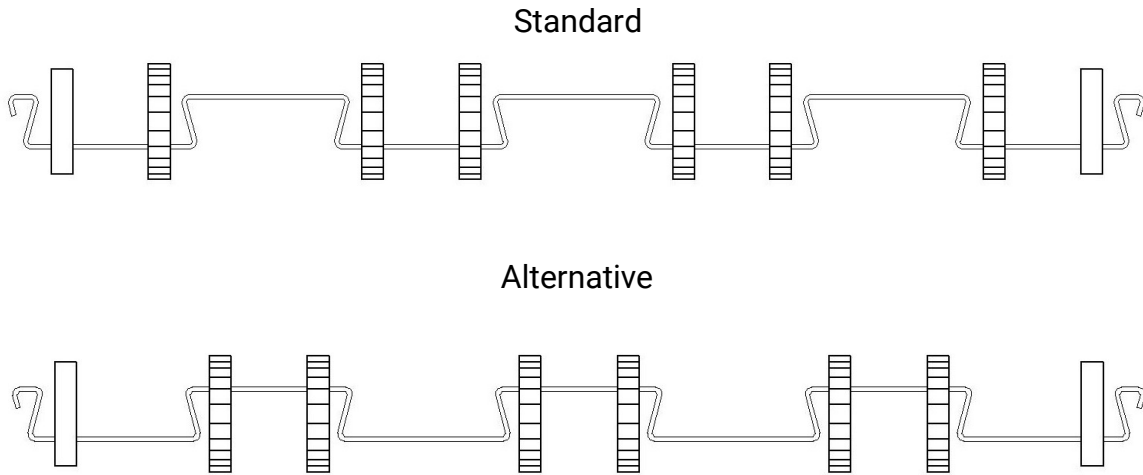
### Manufacturing Tolerances:

Stainless Steel:	BS 4500	1969 H8
Polyoxymethylene:	BS 4500	1969 H9

Sprockets are secured by two (2) socket head set screws at nominally 90°.  
Blanks have a single fixing position only.

## Sprocket Arrangements

Sprockets are usually placed in odd numbered spaces to allow use of splicing clips without interfering with sprockets. If clips are never used, placing sprockets in even numbered spaces ('Alternative' style) is acceptable. However you should never mix the two arrangements.



### Calculating the Number of Sprockets

The number of sprockets required to drive your belt depends on the number of spaces across the belt. Here's how to calculate it:

Belts with a single loop edge need one less sprocket than the number of belt spaces, plus two blanks.

Drive shafts for double loop edge belts should be set up 'Alternative' style.

Note: Two exceptions to these rules: A) a single space belt uses only two (2) sprockets; B) a three space belt requires four (4) drive sprockets and no blanks.

Three Space Belt Arrangement



Single Space Belt Arrangement

